



16th Bhadra, 2076 Monday

Market Summ... concerning previous day's trading Sunday"

NEPSE Index – Sunday



MARKET SUMMARY

NEPSE	1,184.78	-0.97%
Total Turnover (Rs.)	297,398,003	+7.22%
Share Volume	1,104,395	+13.17%
Total Transactions	6,478	+14.11%
Total Market Cap. (Rs. Mill)	1,504,688.47	-0.97%
Floated Market Cap (Rs. Mill)	541,286.37	-0.90%

MARKET CAP TO GDP RATIO 50.03% ▼

WEIGHTAGE ON MARKET CAP

Commercial Banks	52.95%
Development Bank	5.35%
Finance	2.94%
Microfinance	6.49%
Life Insurance	6.95%
Non-life Insurance	5.29%
Hydropower	6.52%
Hotel	1.73%
Manufacturing And Processing	4.02%
Trading	0.11%
Others	7.65%
NTC	6.61%

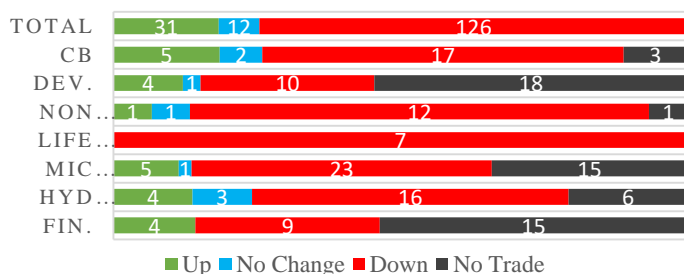
Top Gainers	SABSL, UFL, GBLBS
Top Losers	SJCL, RHPL, OHL
Top Stocks by Shares Traded	KBL, PRVU, CEFLPO
Top Stocks by Transactions	RHPL, SJCL, SABSL
Top Stocks by Turnover	NLIC, SHIVM, PRVU
Top Brokers by Transactions	34, 44, 28

NEPSE STATISTICS

Average Return	15.57%
Standard Deviation	16.90%
Skewness	0.47
Kurtosis	3.55

Notes: NEPSE Index from 2069.04.01 – 2076.05.15. Avg. annual trade day's 229. Lognormal return is used. Skewness shows market is asymmetrically skewed to right, indicating average return of 15.57% more affected by outliers. Further excess kurtosis shows fat tail and more peaked distribution than normal.

TRADED SCRIPTS STATS



MAJOR MARKET NEWS

- Market opened the week's trade with a bearish candle. NEPSE Index lost by 11.63 points and stood 1184.78 level.
- Sensitive, Float and Sensitive Float Index all fell by 1.95, 0.8 and 0.58 points respectively.
- Except Finance, remaining Sub-Indices closed Red on the day.
- SABSL and UFL hit the positive circuit, gaining 9.98% and 9.71% respectively.
- The 242nd BOD meet of NLBBL has proposed 15% bonus shares and 5.79% cash dividend to its shareholders.
- Citizens Mutual Fund-1 (CMF1) Shrawan NAV increased to Rs.11.47 from Rs. 11.35 last month;
- MPFL is inviting its shareholders to attend the 20th and 21st AGM of the company on 4th Ashoj, 2076.
- MBL allots its 30 lakhs units 10.25% Machhapuchhre Bank Debenture 2085.
- NMB Sulav Investment Fund-1 (NMBSF-1) Shrawan NAV decreased to Rs.10.51; from Rs. 11.92 last month
- Nagarik Laghubitta is conducting its SGM on 2nd Ashoj, 2076. The company is subject to merger with Womi Laghubitta for which swap ratio is determined at 100:72.
- Chinese hackers hacked into Nepalese banking system and robbed more than Rs. 5 crores.
- NLG is inviting its shareholders to attend 13th AGM on 8th Asoj, 2076.
- The 225,720 units of promoter shares of BHBL is converted to ordinary shares.
- Adjusted price for NICGF is Rs. 8.65 for 10% cash dividend.

Today's Events (Monday)

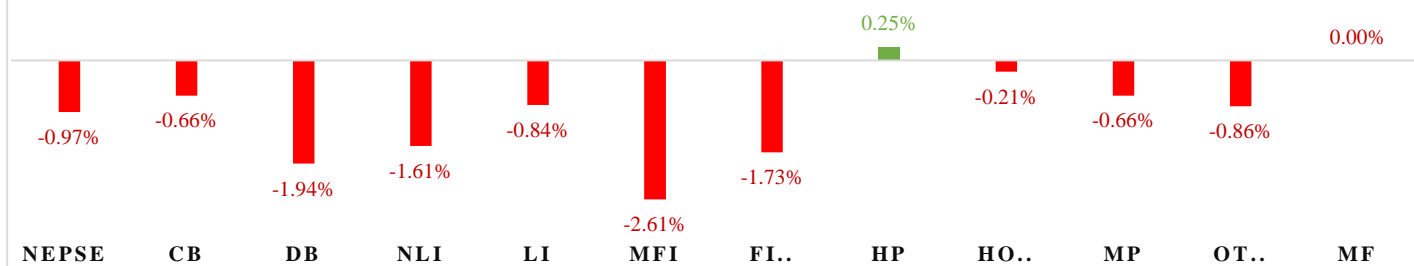
- Debentures Alert:** SBL is issuing 10.25% 25 lakh units debentures. Issue open till 19th Bhadra.
- Right Shares Alert:** MNBBL is issuing 20% Right
- Right Shares Alert:** SLICL is issuing 70% Right
- Right Shares Alert:** GILB is issuing 100% Right
- Right Shares Alert:** UIC is issuing 240% Right
- Auction Alert:** CBL is selling its 1,282,881 units promoter shares via auction.
- Auction Alert:** BFC is selling its 557,674.57 units promoter shares and 244,549.90 units ordinary shares via auction.
- Auction Alert:** JSLBB is selling its 18,503 units ordinary shares via auction.



MARKET SUMM...

16th Bhadra, 2076 Monday

INDICES % CHANGE



Volatile Stocks

NGPL	(108)	10.68%
UFL	(192)	7.87%
API	(121)	7.83%

Stock Movement

AKBSL	(330)	Highest till now
SPDL	(75)	Lowest till now
RHPL	(174)	Lowest till now

Highest Volume – Day 5 (Week 7)

KBL	(202)	46,032 units
SANIMA	(346)	41,490 units
PRVU	(260)	40,361 units

Sectorial Outlooks

Bullish

Finance

-

Bearish

Life Insurance

Non-Life Insurance

Stock Pick...

Up Pick

MEGA

UFL

Down Pick

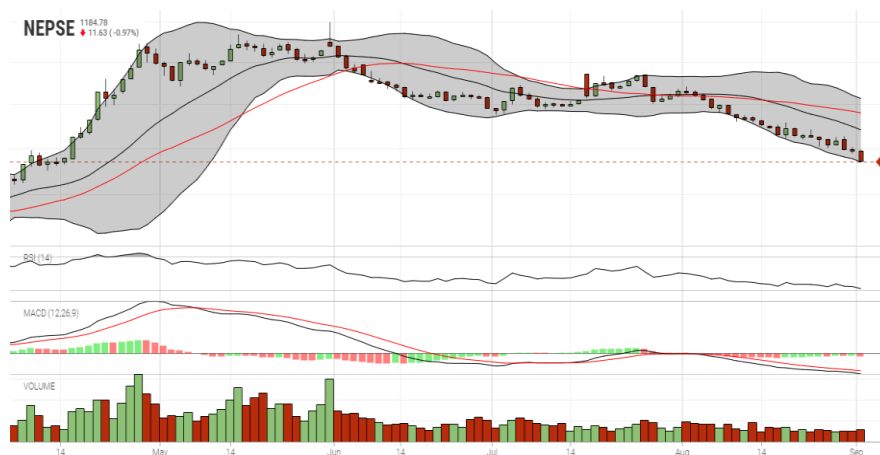
SHIVM

HGI

Financial Metrics

S.N.	Ticker	LTP	EPS	BVPS	P/E	P/B	ROE	NPL	CAR	Remarks
1	SICL	754	44.73	250.17	16.86	3.01	19.64%	-	-	-
1	SIC	539	27.62	191.17	19.51	2.82	15.57%	-	-	-
2	JSLBB	927	73.73	327.01	12.57	2.83	26.99%	2.23%	8.37%	-
3	NIL	384	29.22	195.90	13.14	1.96	16.12%	-	-	-
5	BFC	93	9.92	87.53	9.38	1.06	17.56%	18.46%	17.17%	-

NEPSE TECHNICAL OUTLOOKS



Date / Time	15.05.2076
Close	1184.78
Open	1196.61
High	1198.51
Low	1183.97
Bollinger Bands Top (20,2,ma,y)	1256.95
Bollinger Bands Median (20,2,ma,y)	1220.69
Bollinger Bands Bottom (20,2,ma,y)	1184.42
RSI (14)	22
MA (35, Price, ma, 0)	1240.09
MACD (12,26,9)	-16
Signal macd (12,26,9)	-13
macd (12,26,9)_hist	-2

Indicators used: Bollinger Bands, MACD, RSI, Moving Average (35 days) Volume

Global Indices

SENSEX
37,332.79 (+0.71%)

NIFTY
11,023.25 (+0.68%)

S&P 500
2,926.46 (+0.06%)

DJIA
25,403.28 (+0.16%)

NIKKEI 225
20,704.37 (+1.19%)



Today's
Outlook

Disclaimers: This MARKET SUMM is prepared to timely update the market participants about the Nepalese stock market before the Market opens for the day. The information and data herein should not be construed as an investment advice or recommendation. Should the investors choose to act based on this report, it shall be entirely at their own risk and KCL Astute shall not be liable, for any loss or damages incurred thereby. Unless otherwise specifically stated, the above data concerns the previous trading day.

KCL Astute Capital Limited

Address: Sundar Bhawan, Hattisar, Kathmandu

Contact No. 977-1-4429149 | 4429150

Email: info@kclastute.com

KCL ASTUTE CAPITAL RESEARCH TEAM